

WAIKATO RIVER TRAIL – Waipapa northwards

Topo50 Map: BF35 Whakamaru

GPS: NZTM on WGS84

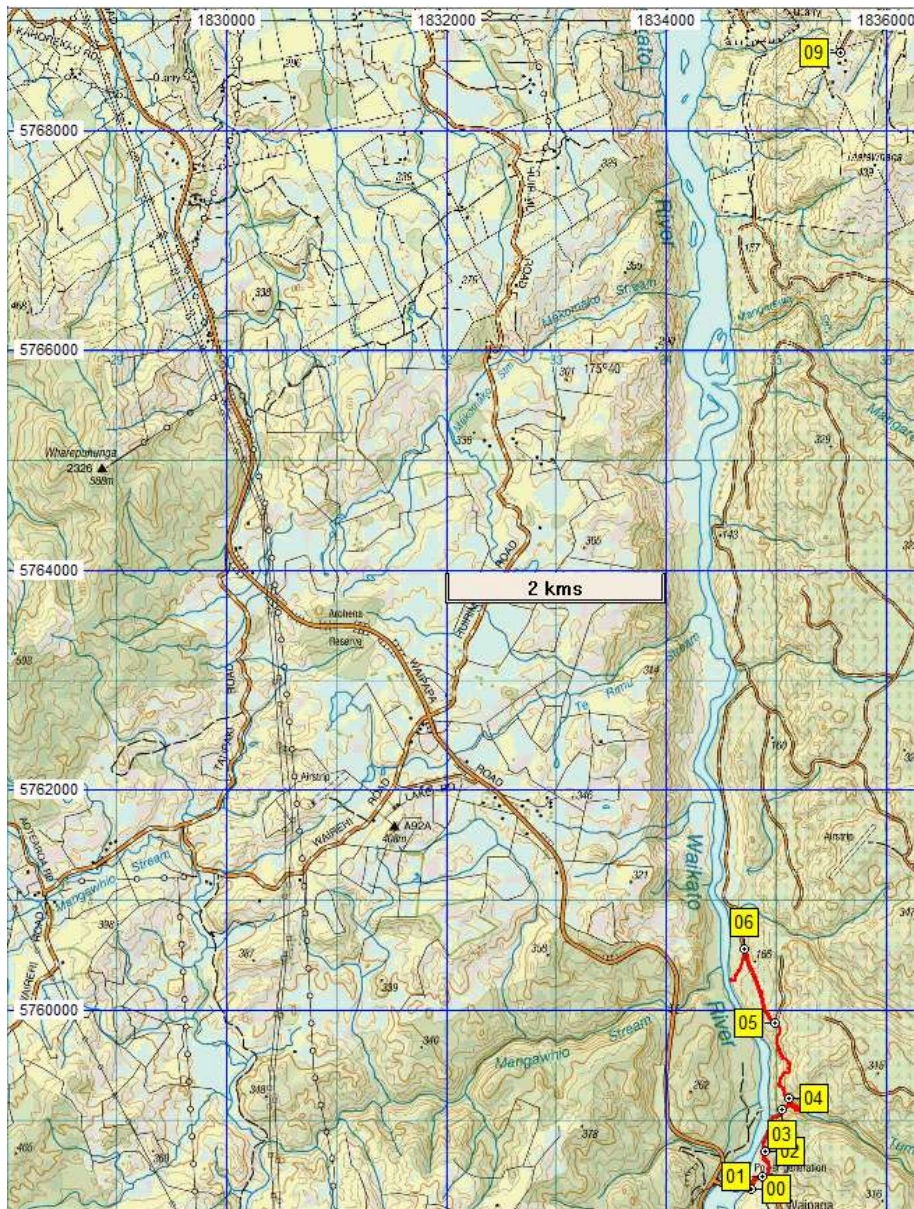
How to get to START: Exit Taupo northwards on **SH1** and turn off at the top of Control Gates Hill left to Poihipi Road:

- follow Poihipi to the end
- turn right on SH32 to Whakamaru then
- left on SH30, head to and pass both roads signposted off right to Mangakino
- Pass the road to Maraetai Power Station
- Keep going on Waipapa Road with the river clearly seen on the RHS
- Arrive at Waipapa Reserve with picnic area just before Waipapa Dam
- Tramp starts over the dam and up the hill a little bit (**WP00**)

Time taken from Taupo Police Station is just under one hour and the start of the tramp line shows in red on sheet BF35 on the right.

Rough Description: A fairly long walk which many say is not inspiring and data only exists for a kilometre or two at this stage. On the map on the right the start (**WP00**) and end (**WP09**) points are both marked.

Detail:



Name	Easting	Northing	Alt...	Description
00	1834775	5758377		Car park at gate on road East end of Waipapa Dam
01	1834876	5758491	141	5min (200m); Left off sealed road at "Head Race" sign on gravel road
02	1834895	5758714	128	9min (477m); DoC toilet off-track on RHS
03	1835057	5759098	130	17min (956m); Bridge over Tumai Stream (Giardia)
04	1835109	5759198	184	31min (1.34km); Set of zig zagging stairs up steep bluff face
05	1834982	5759878	185	47min (2.21km); T-junction with Jack Henry road off right
06	1834712	5760553	130	1hour (2.95km); Clearly marked left turn to soon see road bridge over Mangawhio Road to the SW
09	1835585	5768712	340	Exit River Trail to Waotu South Road